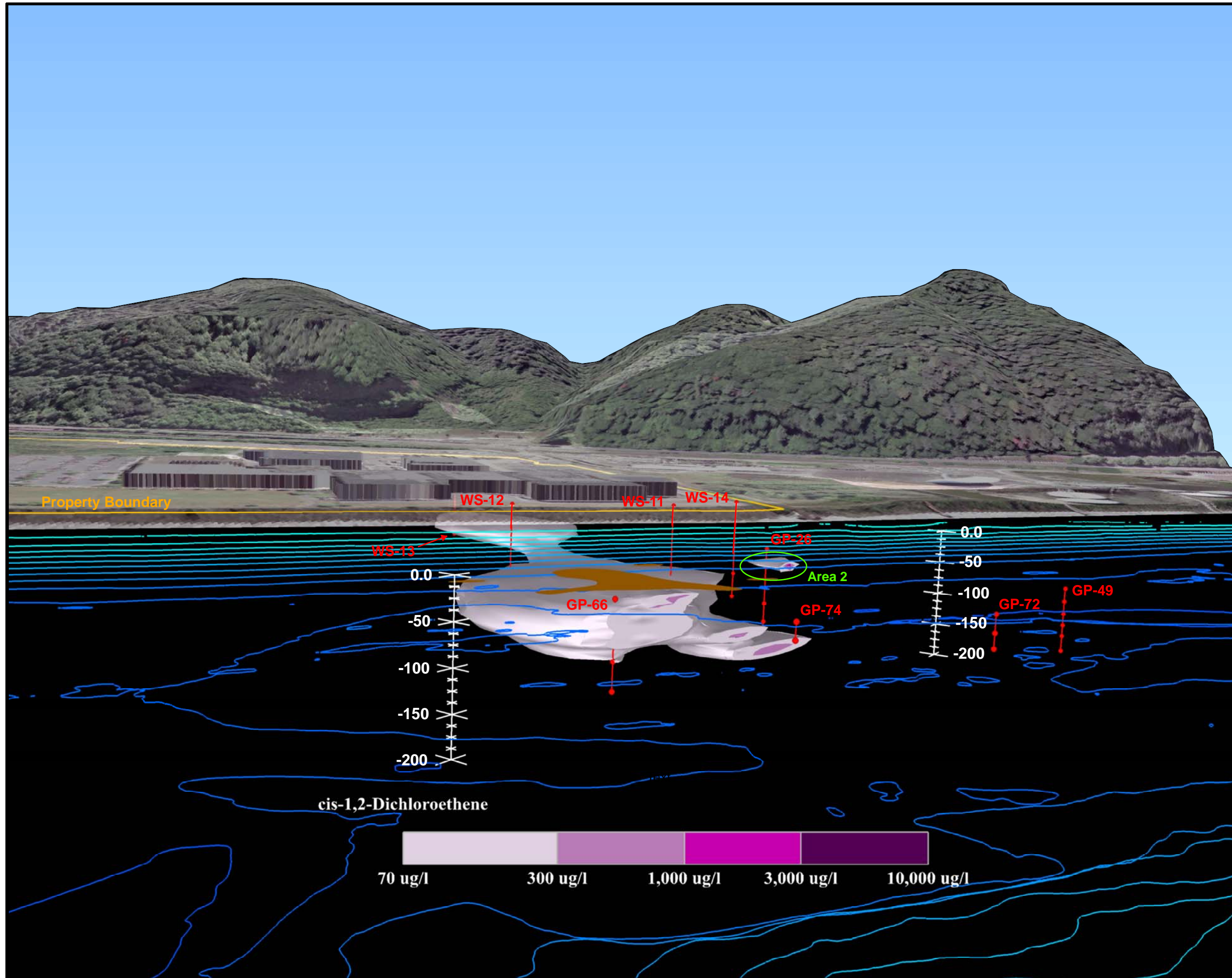


**Figure 4-14C**  
**cis-1,2-DCE -**  
**North Cross Section**



**Legend**

- Extent of cis-1,2-DCE Plume above 70 ug/l
- Area 1 (transition zone impacts)
- Water contours illustrate bathymetry

In-River Geoprobe Sample Breakdown

- = Transition Zone Water Samples
- = Deeper Groundwater Samples
- = Deep Groundwater Samples from Base of AWBZ

**Notes**

- \* Vertical distance is based on feet above/below mean sea level (msl)
- \* Only a portion of monitoring well and geoprobe locations are posted; plume is based on a larger collection of sample locations
- \* The extrapolated plume is based on November 2005 and prior laboratory results and is likely to have changed
- \* 3D model has been "sliced" along section line C-C' illustrated on Figure 4-11A

**NOT TO SCALE**